

Beauty Is...

Harmony

ADRIANA CUT



BEFORE



1. Section the hair from the temples on both sides into a round horseshoe shape under the crown area.



2. Start the haircut in the side area. Using a clipper-over-comb technique, cut shorter to longer following the curve of the head shape to create graduation. Repeat the same method throughout the opposite side.



3. At the base of the hairline create a short outside line by using a flexible thin comb. Continue the clipper-over-comb technique through the nape and back area.



4. Release the top section and cut using a square layer technique. Project the hair up to a 90-degree elevation and cut straight across with your finger angle parallel to the section. Continue through the top using a traveling guideline.



5. Through the fringe area, comb the hair down into its natural falling position. Then hold the hair using your comb as a guide and cut a solid line with your scissors resting against the comb.



6. Blow-dry the hair using **Design Foam** and a wrap technique into its natural falling position. On dry hair, refine the haircut and personalize where needed. To finish the look use **Taffy** and **Keratin Healing Oil Lustrous Finishing Spray**.



L'ANZA

Beauty Is...

Harmony

ADRIANA COLOR



BEFORE



Model's hair was a natural level 7 with a pre-lightened existing level 10.

Pre-lighten the hair using an on-scalp regrowth application with 30g Powder Decolorizer + 60g 20 Volume Cream Developer

1. Begin by sectioning the focal area using a half-moon shape on the top highest part of the head.



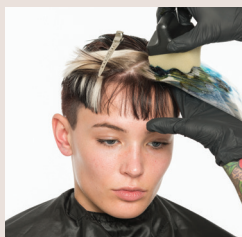
2. Apply the **Base Formula** all over using a classic tint application method.



Base Formula: 30g 3N + 10g 4V + 40g 10 Volume Cream Developer

3. Use a sponge technique to apply 3 different color formulations in the moon section.

Process for 20 minutes then cleanse and condition with Healing Color-Care Shampoo and Conditioner.



VIBES Sponge 1: 25g Clear + 10g Teal

VIBES Sponge 2: 25g Clear + 10g Blue

VIBES Sponge 3: 25g Clear + 2g Yellow + 2g Teal

L'ANZA

Beauty Is...

Harmony

DENA CUT



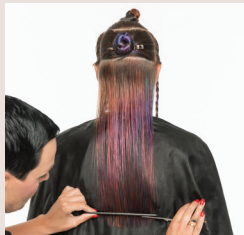
BEFORE



1. Section the top area into a horseshoe shape from the temples through to the crown. Next, take a vertical section on top of the ears and separate the back from the sides.



2. Begin by cutting the length first. Comb the hair down into its natural falling position and cut a solid one-length line. Use your comb to hold the hair into place with minimal tension.



3. Release the back section. Using horizontal partings project the hair upward and over-direct the hair forward and cut a square line across.



4. Proceed to the top section and divide this area into 3 sub-sections. Beginning at the front project forward using low elevation and cut.



5. Continue the layering method by increasing the elevation as you progress back.



6. Blow-dry the hair using a cocktail of **Foundation Mousse** and **Smoother Straightening Balm** for support, volume and smoothness. Once dry, check the outside perimeter line and texturize the layering if needed.



L'ANZA

Beauty Is...

Harmony

DENA COLOR



BEFORE



Model's hair was a natural level 7 with a pre-lightened existing level 10.

1. Begin by dividing the top area into a heart shape concept, creating 2 symmetrical sections on both sides of the top of the head.



2. Color the heart from the roots to the ends with **Formula 1**.

Apply the same formula to the roots 1 1/2" underneath the heart shape.



3. Using a balayage technique, blend the root color 6" downwards use **Formula 2**.

Process for 20 minutes or until hair reaches level 9. Cleanse and condition with Healing ColorCare Shampoo and Conditioner.



4. For the final step use an airbrush technique on small sections of the hair visually using **VIBES Formulas 3, 4, and 5**.

Process for 20 minutes. Cleanse and condition with Healing ColorCare Shampoo and Conditioner



Formula 1: 30g 7P + 30g 6P + 1g 3V + 60g 10 Volume Cream Developer

Formula 2: 30g Powder Decolorizer + 60g 10 Volume Cream Developer.

VIBES Formula 3: 60g Clear + 6g Magenta, + 2g Red + 2g Smoke 50g + Color Attach Step 1

VIBES Formula 4: 35g Clear + 30g Blue 5g + Smoke 50g + Color Attach Step 1

VIBES Formula 5: 30g Clear + 30g Orange + 7g Yellow + 3g Smoke + 50g Color Attach Step 1

L'ANZA

Beauty Is...

Harmony

MELANY CUT



BEFORE



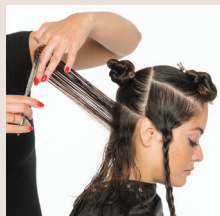
1. Divide the hair in 5 sections as shown. Top section from the temples to the turning point on the top of the head. Side sections vertically to the back of the ear. Back section horizontally across from the occipital bone to the top of the ear.



2. Begin in the back nape area and cut your perimeter line. Comb the hair down into its natural falling position and cut a solid line. Use a comb control technique resting your scissors against the comb for minimal tension on curly hair.



3. Next, begin the layering method. Using vertical sections project the hair to 45-degree elevation above the horizontal line. Follow your guideline throughout this nape area, working with a traveling guide.



4. Next work through the back and side sections. Using vertical sections and the same elevation use over-direction. Therefore each section is brought back to a stationary guide to create length through the sides.



5. Release the top area and begin with a section through the center. Using the completed back as your guide, over-direct the top to the crown cutting from shorter to longer to retain length in the front.



6. Dry the hair into its natural curl using a blow-dryer with a diffuser and use **Curl Define Cream** for extra curl support and definition.



L'ANZA

Beauty Is...

Harmony

MELANY COLOR



BEFORE



Model's hair was a natural level 7.

1. Braid the hair into 4 sections as shown. First section on top braid is forward, the side braids are backward, the nape braid is downwards.

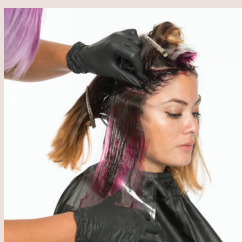


2. Decolorize the ends of the hair in the braids using **Formula 1**. Process until hair reaches Level 9, then rinse.

Cleanse and condition with Healing ColorCare Shampoo and Conditioner



3. Proceed with a regrowth application and color the darker level hair with **Formula 2**.

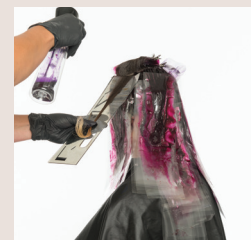


4. Use the L'ANZA Color Films and alternate **Formula 2** with **Formula 3**.



5. For the final step airbrush the hair with **Formula 4**.

Process for 20 minutes. Cleanse and condition with Healing ColorCare Shampoo and Conditioner



Formula 1: 30g Powder Decolorizer + 60g 20 Volume Cream Developer

VIBES Formula 2: 40g Smoke + 28g Red + 20g Violet

VIBES Formula 3: 40g Smoke + 40g Magenta + 8g Orange

VIBES Formula 4: 10g Teal + 10g Magenta + 20g Color Attach Step 1

L'ANZA