

COLOR

Pre & Post Service:

Color Attach Step 1 – Pre Color Service

Color Attach Step 2 – Post Color Service

Beauty Bath (Maximum Formula)

30g Healing Color-Cleansing Shampoo +

30g Healing Powder Decolorizer +

30g 20 Volume Healing Color Developer +

5g Trauma Treatment

Formula A

10g 3V + 10g 5RRC + 8g R Mix + 2g V Mix +

30g 20 Volume Healing Color Developer

Formula B

8g R Mix + 2g V Mix + 10g Translucent Color

Catalyst + 20g Demi Healing Color Developer

Formula C

11g G Mix + 2g R Mix + 13g Translucent Color

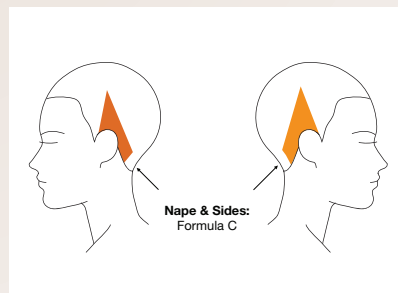
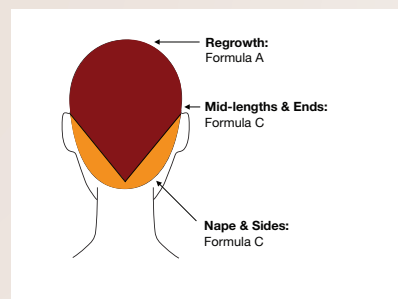
Catalyst + 26g Demi Healing Color Developer

***Model Began with a Starting Level 5**



INFRARED

1. Mix a L'ANZA **Beauty Bath**, and apply to mid-lengths and ends, feathering up to the base. Process to a Level 7, then rinse, cleanse, and condition with **Healing ColorCare Shampoo and Conditioner**.
2. Spray **Color Attach Step 1** throughout hair and comb through. Apply **Formula A** to the re-growth area, then use **Formula B** on mid-lengths and ends.
3. Taking fine sections to ensure proper saturation, apply **Formula C** to nape of the neck and sides only.
4. After Formula C has been applied, process for 45 minutes, then rinse, cleanse, and condition with **Healing ColorCare Shampoo and Conditioner**. Spray **Color Attach 2** into towel-dried hair and comb through. Style as desired.



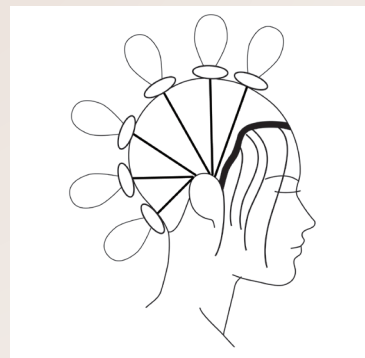
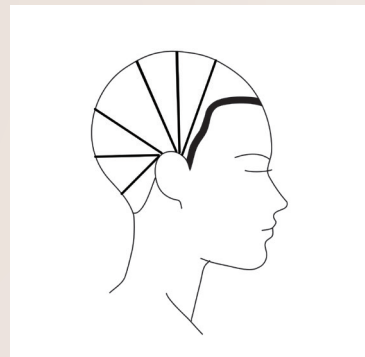


STYLE FOUNDATION

1. Cleanse and condition with **Healing ColorCare Shampoo and Conditioner**.
2. On damp hair, apply a golf-ball size of **Design Foam**, cocktailed with a dime-size of the **Keratin Healing Oil Hair Treatment**, from scalp to ends.
3. Blow-dry using a large round brush, following the ABCs of blow-drying. Start working the base until it is dry, next the mid-lengths, and finally the ends.

STYLE 1

1. Using diagonal partings that pivot from the top of the ear on each side, create 6 ponytail sections secured in the center top of each subdivision. Make sure to cover partings from previous section as the next ponytail is secured. Use **Keratin Healing Oil Lustrous Finishing Spray** to keep sections smooth.
2. Wrap the base of each ponytail around 2 fingers and create a loop. Then close off the loop by wrapping the ends of the ponytail around the base. Secure with bobby pins. For finer hair, back-comb ponytail sections before you wrap to give more fullness. Use **Keratin Healing Oil Lustrous Finishing Spray** to give support and shine.
3. Release front isolated sections and allow to fall free for creative detail. Apply **Color Illuminator** spray to enhance color and create a perfect polish.



STYLE FOUNDATION

1. Cleanse and condition with **Healing ColorCare Shampoo and Conditioner**.
2. On damp hair, apply a golf-ball size of **Design Foam**, cocktailed with a dime-size of the **Keratin Healing Oil Hair Treatment**, from scalp to ends.
3. Blow-dry using a large round brush, following the ABCs of blow-drying. Start working the base until it is dry, next the mid-lengths, and finally the ends.



STYLE 2

1. Loosely gather all hair in front of the face into a ponytail. The elastic should go about 4" from the ends of hair, or 3" out from the nose, whichever is the longer distance.
2. Roll the end of the ponytail into a medium-tight roll and continue rolling until you reach the hair line and see an eyeball. Then, secure the roll with bobby pins.
Tip: Don't forget to cross your pins!
3. When hair has been combed in place, lightly spray with **Color Illuminator** for added shine and color protection. Then finish with a generous mist of **Keratin Healing Oil Lustrous Finishing Spray**.

