

COLOR

Pre & Post Service:

Color Attach Step 1 – Pre Color Service
Color Attach Step 2 – Post Color Service

Decolorizer Formula

30g Healing Cream Decolorizer + 30g
20 Volume Healing Color Developer

Glaze Formula

40g 100 + 20g 8G + 60g Translucent Color
Catalyst + 120g Demi Healing Color
Developer

Color Band Formula

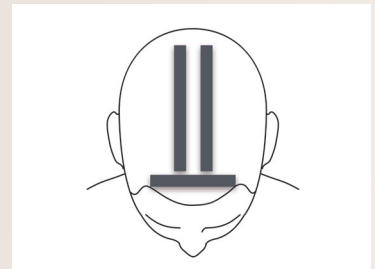
10g 6G + 10g 4CG + 20g Demi Healing
Color Developer

***Model Began with a Starting Level 5**



PINSTRIPED

1. From the center part of the head, take out a 1" section, pin back and protect. Take another section underneath, about 1" in thickness.
2. Balayage **Decolorizer Formula** onto bendy perm rods. Process until hair reaches a Level 9, and rinse. Then cleanse and condition with **Healing ColorCare Shampoo and Conditioner**.
3. Spray **Color Attach Step 1** throughout hair and comb through. Apply **Glaze Formula** over the entire head, process for 20 minutes, and rinse. Then cleanse and condition with **Healing ColorCare Shampoo and Conditioner**.
4. Spray **Color Attach Step 1** throughout hair and comb through. In back-to-back foils, take fine sections and lay them horizontally. Using medical tape, create a row of pin stripes down each foil.
Tip: The medical tape will not only block the hair from color, it will also keep your lines straight!
5. On hair unprotected by tape, apply the **Color Band Formula**. Then wrap the section in balayage film to separate, and offer a stationary guide. Repeat in the remaining 2 sections, and process for 30 minutes. Rinse, then cleanse and condition with **Healing ColorCare Shampoo and Conditioner**. Spray **Color Attach Step 2** into towel-dried hair and comb through.



*Medical Tape

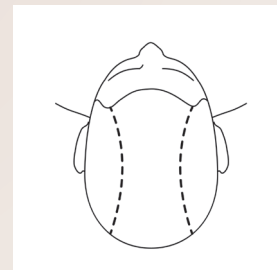
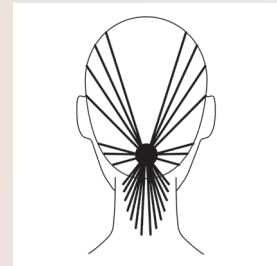


STYLE FOUNDATION

1. Cleanse and condition with **Healing Strength White Tea Shampoo** and **Manuka Honey Conditioner**.
2. Cocktail a dime-size of **Keratin Healing Oil Cream Gel** and **Keratin Healing Oil Combing Cream**, and apply to damp hair, from scalp to ends.
3. Using a paddle brush, dry the hair using the ABCs of blow-drying.

STYLE 1

1. After hair is completely dry, spray 4-6 pumps of **Beach Spray**, then rough dry with a blow-dryer on a cool setting to remove any moisture from the product.
2. Section hair along the parietal ridge on both sides, until you reach the round of the head. Then create a diagonal section ending right below the occipital. Take all hair above the section line, and clip away.
3. With a Mason Pearson, or similar cushion-style brush, start combing all remaining hair into a pony, right below the occipital. (**Tip:** Tilt the clients chin up whenever making a pony, to ensure a tightness to the head and the nape.)
4. After the pony is secure, mist with **Keratin Healing Oil Lustrous Finishing Spray**.
5. Let down the top section, and sprinkle **Powder Up Texturizer** at the base, then squeeze per 2" at the base. Back-comb the hair in a brick-lay pattern.
6. After back-combing, smooth the outside of the entire section. Pick your direction, left or right, and comb all the hair in that direction, essentially creating a French twist.
7. Pin to secure, and shape your twist! When you've finalized your shape, lock it in with **Keratin Healing Oil Lustrous Finishing Spray**.



STYLE FOUNDATION

1. Cleanse and condition with **Healing Strength White Tea Shampoo** and **Manuka Honey Conditioner**.
2. Cocktail a dime-size of **Keratin Healing Oil Cream Gel** and **Keratin Healing Oil Combing Cream**, and apply to damp hair, from scalp to ends.
3. Using a paddle brush, dry the hair using the ABCs of blow-drying.

STYLE 2

1. Take a section along the parietal ridge, and clip away everything above that section.
2. Back-comb all remaining hair down, except for 1" around the entire hair line.
3. Pick a side, and make a parting from top of ear to previous parietal parting. Clip that section away so there is one side down, along with the entire back
4. Brush all hair down toward that section, placing a line of Bobby pins up the center back. Drop clipped away side section, and combine that with the hair already brushed in that direction toward the center back, then roll the hair into a twist. Secure by crossing the earlier line of pins created up the center back.
5. Drop top section, and back-comb in a brick-lay pattern to desired height. Create a roll with your top section by crossing 2 pins. Leave out 1 ½" inch in the front.
6. Gently brush hair back and blend with the sides for a seamless connection.
7. Take 1" of the 1 ½" inch left-out section, and smooth over the top of your roll.
8. Leave front ½" free, and down spray with **Dry Texture Spray** to create movement.
9. Finish the entire look with a generous mist of **Keratin Healing Oil Lustrous Finishing Spray**.

